

CERTIFICATE OF LOCATION OF GOVERNMENT CORNER

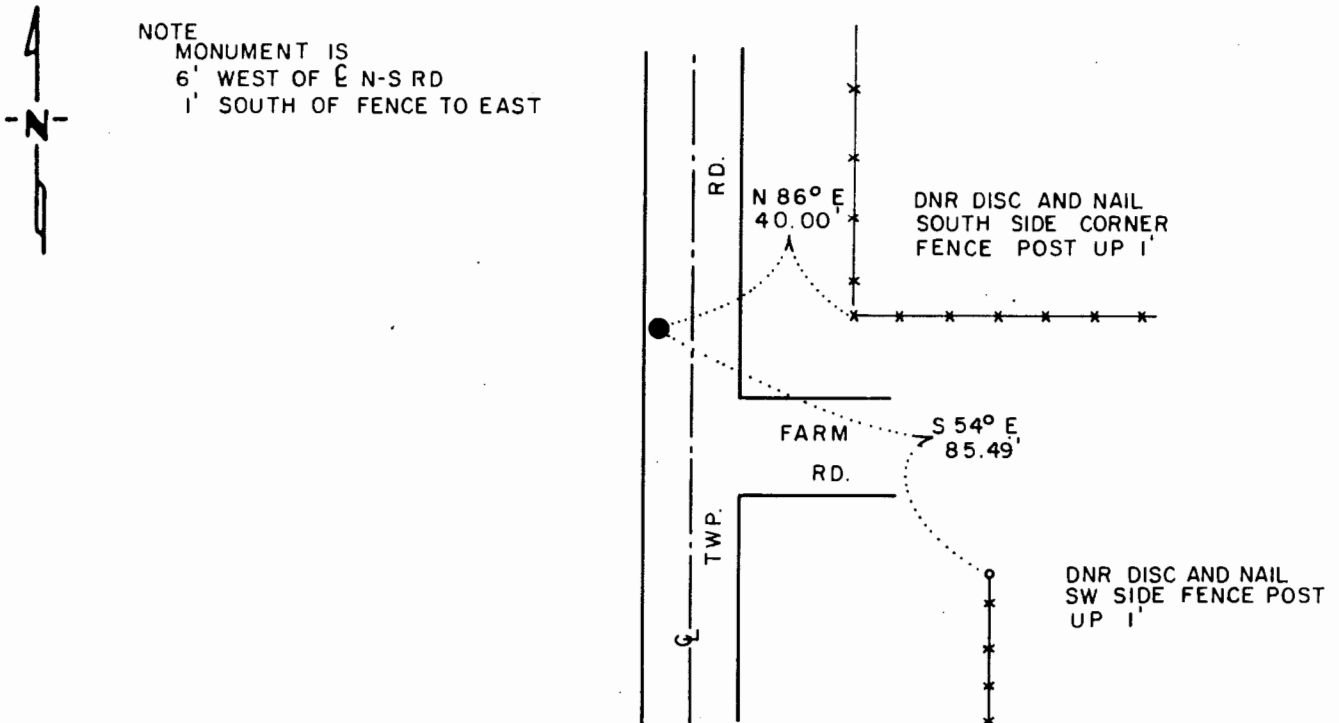
EAST QUARTER Corner of Section 7, Township 108 N., Range 43 W., 5th P.M.

STATE OF MINNESOTA, County of MURRAY

At the corner location shown on the sketch:

- On _____ found a _____
DATE
- left monument as found, lowered monument, removed monument (explain)
- On 4-27-83 placed a 1 1/4" x 1 1/4" x 20" PERFORATED STEEL TUBE WITH
DATE ALUMINUM CAP STAMPED "DNR SURVEY MARKER", DOWN 0.3'

SKETCH OF REFERENCE TIES



TIES TAKEN 8-5-86
BEARINGS OBSERVED WITH COMPASS

Statement of evidence relative to this corner location is on back of page.

J.A.G. 8-18-86
FILE G-202

I hereby certify that this document and the data contained herein was prepared by me or under my direct supervision.

Lowell R. Pommeroy Jr. 9-10-86
SIGNATURE DATE

Registration No. 17005

- Land Surveyor, Professional Engineer
- County Surveyor, County Engineer

OFFICE OF THE COUNTY RECORDER

County of _____

I hereby certify that this document was filed in the Co. Recorders office at _____ .M. on the _____ day of _____ A.D., 19__

County Recorder _____

By _____, Deputy

DOCUMENT NO. _____

East Quarter Corner Section 7, Township 108 North, Range 43 West

This corner was originally established by the U. S. General Land Office survey in 1866. The government notes show corner marked with a wood post set in mound of earth with pits and trench dug around the mound.

In June 1982, the DNR Bureau of Engineering contacted the following for corner information:

Murray County Offices of the Recorder and Highway Engineer
Pipestone County Office of the Recorder

The following information was obtained from the Murray County Highway Engineer's Office:

Surveyor's Record Book contains ties to government corners in Section 8, dated 1940, surveyor not indicated, also contains the following information dated September 1977. Dug for the corner with a backhoe, but found nothing.

On July 7, 1982, the DNR Bureau of Engineering hired a backhoe operated by Buffalo Ridge Plumbing and Heating of Ruthton to dig for evidence of this corner. Dug a 10 ft. by 10 ft. hole, the center being at the intersection of a road north-south and a fence line east. Encountered natural ground down 36", and continued down to 42" but found nothing. Set a temporary point at the above mentioned intersection. Computed the lost position for this corner and found it to be:

2651.31 ft. from adjoining section corners

1.14 ft. south and 5.90 ft. west of the temporary point

Checked a 1955 airphoto which shows occupation east-west, a crooked field road north, swamps and field divisions south.

Accept the lost position as the location of corner.

Traverse information is available from the DNR Bureau of Engineering.

On August 5, 1986 revisited the corner and found the DNR Survey Marker as previously set in good condition and took ties as shown.